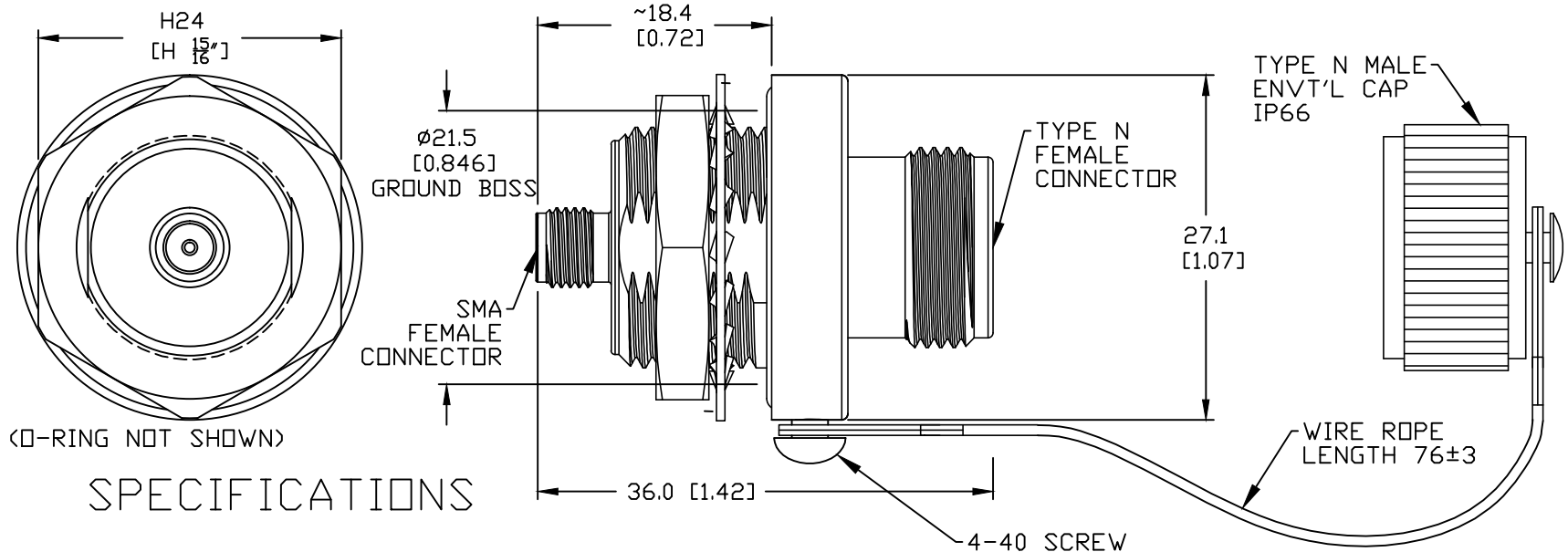


PROPRIETARY THIS DRAWING AND DESIGNS DEPICTED ARE THE PROPERTY OF NexTek Inc. AND MAY NOT BE REPRODUCED, COPIED OR UTILIZED WITHOUT EXPRESS WRITTEN PERMISSION OF NexTek Inc. COPYRIGHT NexTek LLC

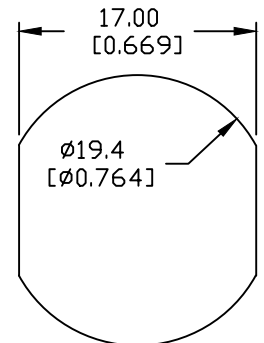
REV	ECO	DESCRIPTION	DRAFT	DATE	APPROVED
01	TBD	PROPOSAL	SCP	13 JAN 21	CAP



SPECIFICATIONS

FREQUENCY:	DC to 6 GHz
INSERTION LOSS:	0.15db TYP/ 0.4db MAX
VSWR:	1.25 AVERAGE/1.4 MAX
RF POWER:	30Wcw 60Wpk
WATER AND DUST PROOF:	IEC529 - IP66
TEMP RANGE:	-55°C TO 90°C
WEIGHT:	~85g / ~3.0oz
MOUNT TORQUE	12 N-m / 100 " LBS

NEXTEK P/N:  
ADPSFNF-01



PANEL 4 [1.16] MAXIMUM  
(PANEL THICKNESS REDUCED)

PROTECTOR MATERIALS/FINISHES:  
HOUSING, RF CONNECTORS, HEX NUT - BRASS/ NICKEL  
LOCKWASHER, SCREW - STAINLESS STEEL  
CONTACTS - BeCu / GOLD  
GASKET - SILICONE RUBBER

ENVTL CAP MATERIALS/FINISHES:  
CAP - BRASS/ NICKEL  
EYELETS, RIVETS, WASHER - STAINLESS STEEL  
WIRE ROPE: 1/32 CRES, NYLON JACKETED  
GASKET - SILICONE RUBBER

DRAWN: S.PERKINS  
RELEASED: G.KAUFFMAN  
DATE: 25 APR 18  
DATE: 15 JUN 18  
THIRD ANGLE PROJECTION

DO NOT SCALE  
MACH. SURFACES ✓  
● 0.07TIR  
DEBURR AND BREAK ALL SHARP EDGES

DEFAULT TOLERANCES  
X=±0.4  
X.X=±0.2  
X.XX=±0.10  
X'=±2'

TITLE: 6GHz ADAPTER w/ ENVT'L CAP/LANYARD  
SIZE: A  
DRAWING NO.: 785-0221  
REV: 01